



amer cento





amer cento



Amor Centro

DRIFTER



amer cento



amer cento

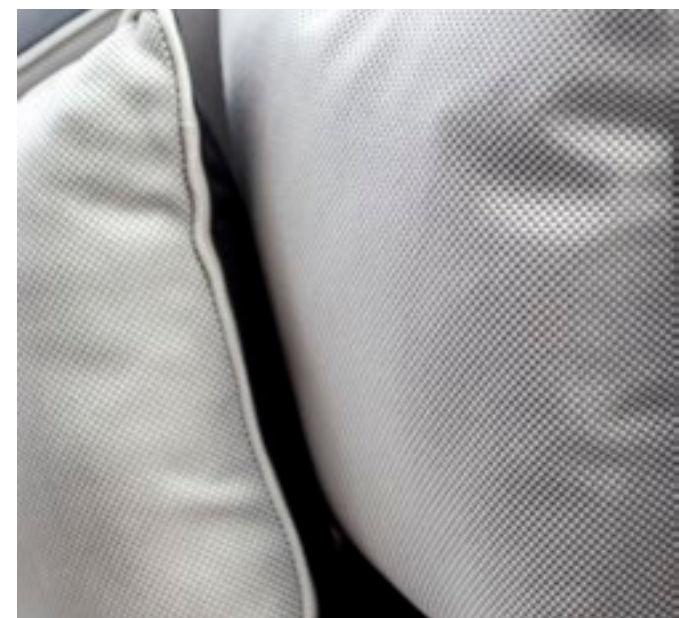


amer cento

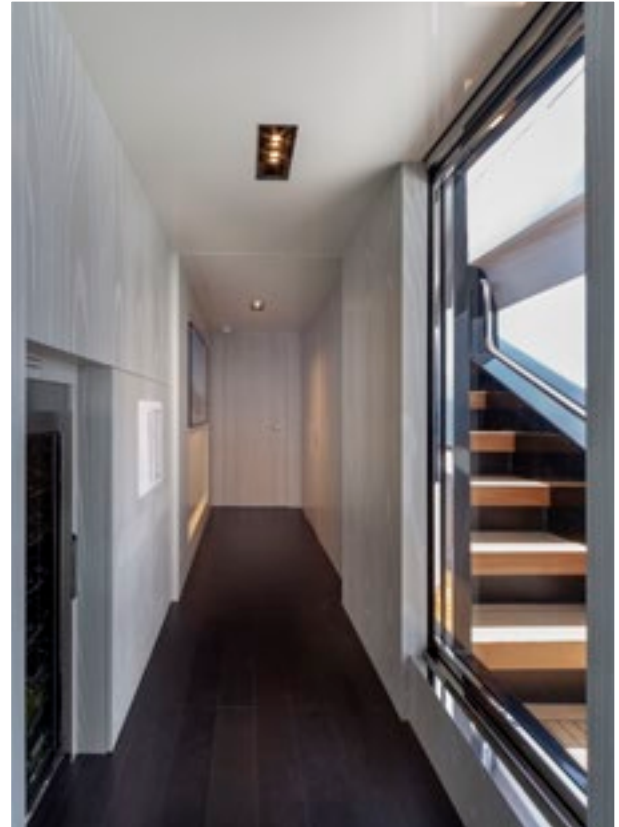












amer cento





amer cento





amer cento





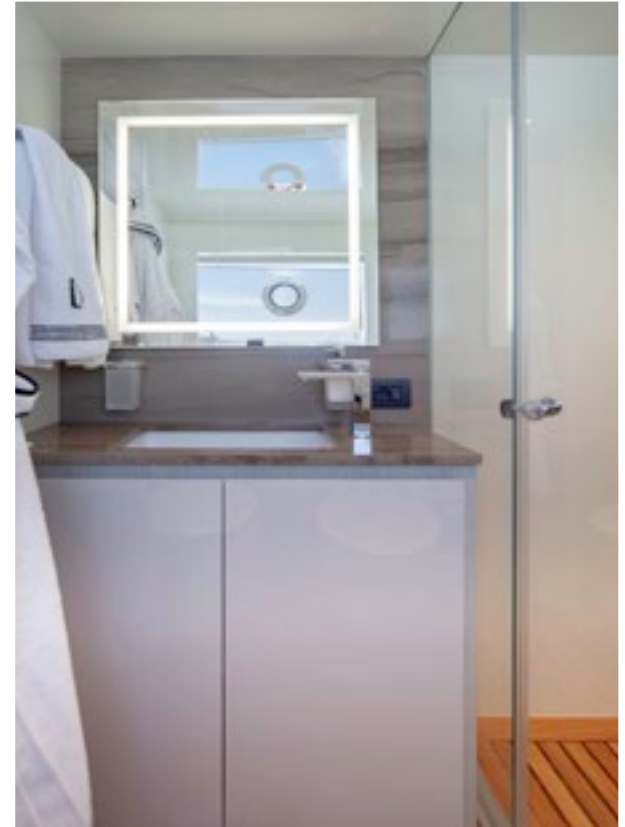
amer cento





amer cento





amer cento





amer cento





amer cento



amer cento



amer cento

LOA
Lunghezza scafo

29,60 m
23,96 m

LOA
Length hull

Larghezza
Immersione massima

7,00 m
1,95 m

Beam
Maximum draft

Dislocamento

85 Tons

Displacement

Materiale

VTR

Material

Motorizzazione

4 x VOLVO PENTA IPS 1200

Propulsion

Combustibile
Acqua dolce

8.500 l
2.000 l

Fuel tank
Water tank

Velocità di crociera
Velocità massima

25±1
30±1

Cruising speed
Top speed

Consumi / Consumption

	Velocità nodi Speed Kts	RPM	Consumi l/h Consumption l/h	LPM	Autonomia Autonomy
*Cr. Economica Economic cruise	9,1 kn	900	37	4,07	2088
* Crociera Cruising	25,3 Kn	2.100	501	19,8	429
Massima Max speed	30,2 kn	2.360	649	21,4	397

www.ameryachts.com



www.ameryachts.it